

How to install a Standard Shipping Container Door

Required Tools:

- Welding set
- Hand grinder
- Power Drill & Impact Driver
- Spirit Level
- Tape measure
- Chalk or chalk pen
- Hammer or mallet
- Pop Riveter
- Silicone gun

Materials Needed:

- Rectangular Hollow Section frame
- 2 x box section support plates
- Standard shipping container door
- Tek screws
- Silicone sealant



Safety First

When installing a container door you should always:

- Consider your surroundings and wear the appropriate PPE
- We recommend a minimum of 2 people to install. Container doors & shutters are heavy
- Ensure that your welding set is properly earthed prior to any welding taking place



Step 1

Measure where you are going to install your steel door & grind off two points directly underneath. In our install, we tack weld 2 support plates to rest the box section rectangular hollow section frame in place for the next stages and we highly recommend this additional step to avoid having to hold the goal post up by hand.



Step 2

Position the rectangular hollow section frame next to the container where you are going to fit your door. The rectangular hollow section frames are typically fabricated from a 50mmx100mm box section and the door frame is installed within this.



Step 3

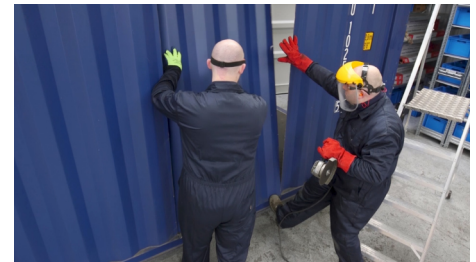
Draw around the perimeter of the rectangular hollow section frame with chalk keeping the aperture line as small as possible, leaving no more than a 2mm gap around the frame. If you draw this too big, you will struggle to weld the box section frame into this opening.

WARNING: Do not be tempted to weld the door frame directly into the container side. The rectangular hollow section frame adds rigidity to the container.



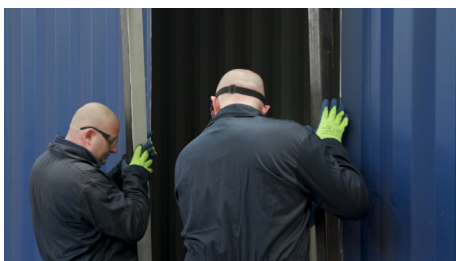
Step 4

Remove the 2 support brackets, then cut the hole into the container side with a hand grinder using the chalk line as a guide.



Step 5

As you are coming to the end of cutting your aperture, ensure someone is supporting the loose sheet of metal so it can be pushed to fall away from you once complete. Then, tidy up the opening using a finishing pad.



Step 6

Offer your rectangular hollow section frame into the opening.



Step 7

Tack weld it into position ensuring it is square and plumb, using a spirit level. We recommend you weld fully across the top, a 100mm weld down each side and a 25-30mm stitch weld every 250-300mm for the remainder.



Step 8

Offer the standard container door into the rectangular hollow section frame opening and pop rivet/tek screw into position using fixing points provided.

For more information please visit our website:
www.lathamssteeldoors.com.au or give us a call on +61 415 310 911